

# Markets For Fiberglass Reinforced Plastic (FRP)

## Pulp & Paper

### FRP Products for Pulp and Paper Mills

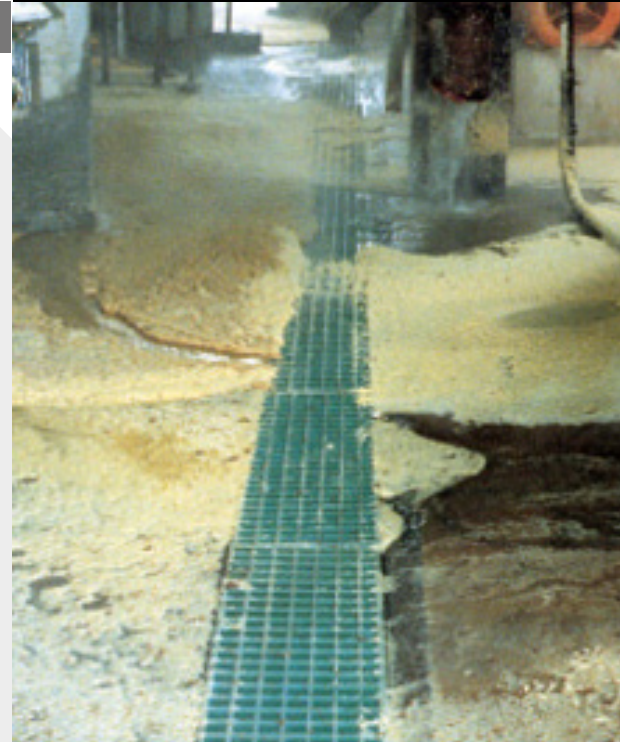
Fibergrate products, with their corrosion- and slip-resistant properties, are ideal in today's rapidly growing recycled paper and deinking operations, where corrosion and slippery conditions are prevalent.

Fibergrate has solved these problems with molded grating, stair treads, floor plate structural shapes and ladder and handrail systems which provide safe, long-lasting surfaces in many of the nation's leading pulp and paper mills.

### Corrosion Resistant

Corrosion is a major problem for metal and wood flooring, stairways and platforms in pulp and paper mills, requiring costly replacement and constant maintenance.

Fibergrate's carefully engineered resin systems assure superior corrosion resistance in pulp and paper mill environments. Open bars allow debris to fall through the grating preventing hazardous and corrosive buildup on surfaces.



*Molded Grating*

*Stair Tread*

*Floor Plate*

*Covered Grating*

*Structural Shapes*

*Ladders & Handrail Systems*

# Fibergrate

Composite Structures

*High Performance Composite Solutions*

# Fibergrate FRP Features

## Slip Resistant

The moisture-laden air in pulp and paper mills contributes to wet walkways, creating hazards to workers. Slippery walking surfaces are a major cause of accidents in pulp and paper mills.

Fibergrate® grating, covered grating, stair treads, covered stair treads, stair tread covers and floor plate feature a long-lasting slip-resistant surface and serve to help combat the slippery conditions found in these plants. Grating and treads come with meniscus or gritted surfaces while floor plate and stair tread covers can be gritted to ensure the best solution for your slip-resistance needs.

## Low Maintenance / Long Life Cycle

In the highly corrosive environments found in pulp and paper facilities, metal and wood components will deteriorate rapidly. Also, the moisture-laden environment accelerates rusting of metals. Products need to be repaired or replaced often, adding to the ever-increasing costs of maintaining pulp and paper mills.



Fibergrate products are engineered to perform in the harshest of environments and need little more maintenance than a washdown. They are durable and can withstand impacts and moisture which would normally destroy standard metal or wood products.

## High Strength-to-Weight Ratio

Fibergrate products, manufactured as a composite of continuous fiberglass strands and high quality resin is integrally constructed for strength. Properly installed, Fibergrate products meet specified load requirements for steel and are more impact resistant than metal.

A high strength-to-weight ratio means that Fibergrate products weigh less than metal for the equivalent load capacity. Fibergrate's composite products weigh one-third the weight of steel and are therefore a more cost-efficient solution. Freight is considerably less and many smaller installations can be done with a two-man crew in a matter of hours.



## No Welding Required

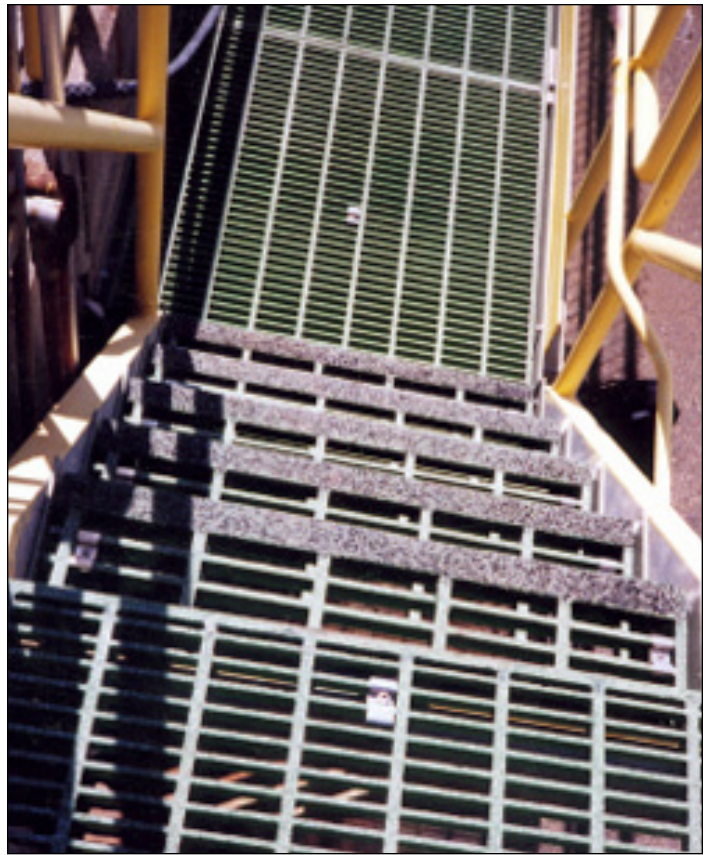
Fibergrate products are easily fabricated with hand tools and can be installed without welding. Unlike metal, Fibergrate panels do not require expensive end-banding when cut.

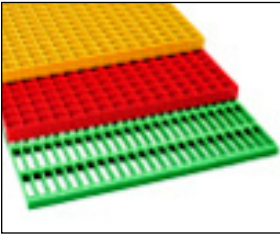
Fibergrate stair treads are available in standard sizes that meet OSHA's stairway requirements. For large projects or nonstandard stairways, slip-resistant stair treads are available in panels that can be cut into any size stair tread required.

## Applications

- Walkways and Accessways
- Work Platforms
- Trench Covers
- Stairways
- Crossovers
- Landings

These are just a few of the pulp and paper applications where Fibergrate is providing long-lasting, economical solutions. Next time you walk through your facility, think about all the places Fibergrate can solve your problems.



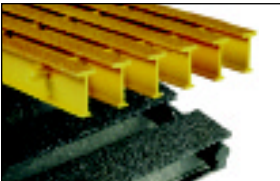


### **Fibergrate® Molded Grating**

Fibergrate molded gratings are designed to provide the ultimate in reliable performance, even in the most demanding conditions. Fibergrate offers the widest selection in the market with ten resins including Chemgrate CP-84 and seventeen grating configurations available in many panel sizes and surfaces.

### **RIGIDEX® Moltruded® Grating**

RIGIDEX Moltruded gratings are the first fiberglass gratings to combine the corrosion resistance of molded grating with the longer span capacity of pultruded grating, all at the low cost of metal gratings.



### **Safe-T-Span® Pultruded Industrial and Pedestrian Gratings**

Combining corrosion resistance, long-life and maintenance-free designs, Safe-T-Span provides unidirectional strength for industrial and pedestrian pultruded grating applications.

### **Dynarail® Handrail**

Easily assembled from durable prefabricated components or engineered to your specifications, Dynarail handrail meets or exceeds OSHA and strict building code requirements for safety and design.

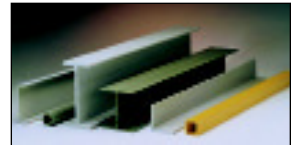


### **Dynarail® Safety Ladder System**

Easily assembled on site, Dynarail safety ladder systems meet or exceed OSHA requirements. Though less costly than prefabricated ladder systems, these safety ladders provide a custom fit to the supporting structure.

### **Dynaform® Structural Shapes**

Fibergrate offers a wide range of pultruded structural components for industrial use, including bars, rods, tubes, beams, channels, leg angles and plates.

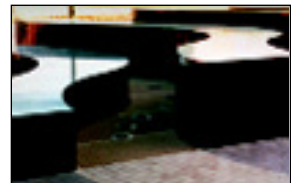


### **Stair Solutions**

Fibergrate offers a wide range of slip-resistant products to meet your stair safety needs. These durable products which include treads, tread covers and covered stair treads are a long-term, cost-efficient solution for your facility.

### **Fabrication Services**

Combining engineering expertise with an understanding of fiberglass applications, Fibergrate provides turnkey design and fabrication of fiberglass structures, including platforms, catwalks, stairways and test racks.



©Fibergrate Inc. 2002 881125-10/02  
Made in the USA



Fibergrate Composite Structures Inc. believes the information contained here to be true and accurate. Fibergrate makes no warranty, expressed or implied based on this literature and assumes no responsibility for consequential or incidental damages in the use of these products and systems described, including any warranty of merchantability or fitness. Information contained here is for evaluation only.

**Fibergrate Composite Structures Inc.**  
4285 Kellway Circle, Addison, TX 75001  
Phone: 972-250-1633 • Fax: 972-250-1530  
800-527-4043 • [www.fibergrate.com](http://www.fibergrate.com)